



أرك اند جري لمقاولات البناء (ش ذ م م)  
**ARC & GREY**  
BUILDING CONTRACTING LLC



Arcana Grey Building Contracting  
Bassan Joinery

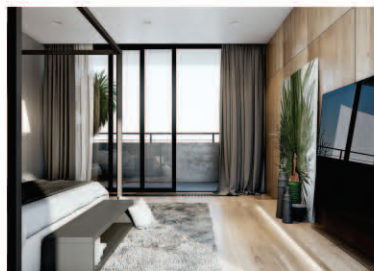
# Building Dreams

from the ground up



# Content

01	Introduction
02	Our Philosophy
03	Products and Services
04	Organization Chart
05	Our Team
06	Project List
07	Project Gallery
08	Quality Control System
09	Process Control
10	Safety
11	Contact details



## Introductions

ARC & GREY Building Contracting LLC is a creative, Interior Design, Interior Fit Out & Furniture Manufacturing company with an in-depth experience in the UAE's luxury residential, hospitality and commercial market. We pride ourselves on our ability to adapt to the individual requirements and demands of each project in order to deliver a bespoke and unique solution for our clients, within their size or budget. We take charge of the project keeping in mind the sentiments of the client, from concept to completion.

At A&G our clients are assured that their orders are processed from start to finish by an experienced team of managers, engineers, supervisors, draftsmen, painters and gypsum craftsmen and tradesmen who will deliver to their expectations.

A&G is synonymous with commitment and quality and has a reliable name keen on living up to professional and international standards, over and above a company with thoroughly understands the requirements of the local market.

Within this capability, A&G has a carpentry and joinery factory under its umbrella called Al Balsan Furniture Industry LLC. It is a 5,500 sq. ft Furniture Manufacturing plant located in Sharjah to provide functional and decorative joinery for small and large scale projects all over the United Arab Emirates. High-quality materials imported from all over the world are used in the joinery production. Each specification is carefully studied to extract the data, sequence and layouts, which best satisfy the visual and aesthetic effects desired for the project in hand. Working with the designer, samples and layouts are scrutinized to ensure that the planned results are achieved.

With a state-of-the-art machinery and well experienced team, our goal is to become an innovative and leading force in the Middle East in the field of Interior design, Civil and Furniture Manufacturing for small and large scale projects. Our designs are aimed at creating pleasant, creative and captivating environments whether for commercial or residential projects.



# bombay painting

Contractors of paint, imported polishing and lamination work

## Introductions

Bombay Painting is one of the pioneers in painting, polishing and lamination company in India. They have worked with most of the top and well renowned Architects in India and the UAE, and have also been a part of prestigious projects like the worlds most expensive house.

Bombay painting's main objective is to make its mark in the UAE market as a world class service provider for all things related to paint and polish for Furniture. In the late 2015, Bombay Painting joined hands with Balsan Furniture. Bombay Painting is not only known for its finishes but also the way they carry their business. This has resulted in long term relations with all clients till date.

### **Our Aim**

Bombay Painting and Balsan together have a very simple goal.

1. To become the leading painting, polishing and lamination contractor in the UAE.
2. To introduce a special Lamination finish which is not understood by a lot of consultants.
3. To work on buildings and high end villa painting and polishing projects.

# Our Philosophy

## Detail

Each and every project at A&G is developed in its totality; wherein all the parts down to the smallest Interior detail, receive equally dedicated attention. The specification and detailing that goes into every project is of utmost importance and is one of A&G's most salient strengths. Offering an unmatched quality of finish and detailing, every single feature in a project is designed and considered.

## Function

At A&G we believe, what works good is better than what looks good.

Short lived fashions and regressive styles are shunned; the aim of physical and esthetic longevity through practicality predominates our design. Personal attention is given to every project ensuring only the highest quality that is long lasting and durable. In the words of the legendary architect Frank Lloyd Wright – "Form that follows function has been misunderstood. Form and function should be one, joined in a spiritual union". It is this philosophy that inspires and drives the design process at A&G.

## Planning

Our purist works are a result of a pragmatic performance-driven approach to design rather than mere form innovation. We have realized over time, that very often the practical aspect of an idea can improve the aesthetic pleasure one gets from it.

At A&G our buildings are planned from the inside out, where exterior forms are a result of interior spatial circulation and performance.

## People

Our team is our most valued resource; A&G focuses on active discussion and collaboration at all levels, which enables every design to reach its most evolved solution. Each work is handled by a talented and dedicated project team who works closely together at every stage of the venture. Depending on size and scope, each project is generally supervised by an Associate, and overlooked by a Director or Senior Associate with a suitable mix of draftsmen, engineers, architects and interior designers.

## Environment

We are deeply committed to the practice of responsible design, working hard at integrating the imperative of environmental sustainability within the strategic goals of every project. A&G has a design philosophy based on respecting both human beings and the environment. One of the most important ideals we have learnt throughout our experiences is to value the environment with long term sustainable solutions and material and structural innovation.

# PRODUCTS & SERVICES

We offer services to:

Hotels	Restaurants	Malls	Office
Shops	Showrooms	Commercial Buildings	Residential Buildings
Hospitals	Villas	Private Apartments	Events

## Joinery

- Wooden Doors (Flush, Semi-solid & Solid)
- Wooden & Glass Partition
- Reception Unit/Counters
- Wall Cladding, Skirting and Mouldings
- Meeting Tables, workstations and Cabinets
- Timber Flooring
- Windows and Ceiling works
- Carving and Art Works
- Kitchen and Wardrobes
- Staircase, Pergolas and Gazebos
- Office Furniture
- Shop fittings
- Lattice work/ Mashrabiya works
- Painting, decorative painting and gold leafing.
- Soft furnishing

## Interiors and Civil works

- Space Planning
- Initial conceptual Design
- 3D Rendering
- Block works
- Gypsum works
- Plastering
- Site execution
- Logistics
- Procurement
- Project management

## Painting and Polishing

Specialist lamination & colour PU paint

- Clear lamination
- Colour lamination
- Pearl lamination
- Colour PU paint
- Metallic PU paint
- Pearl PU paint

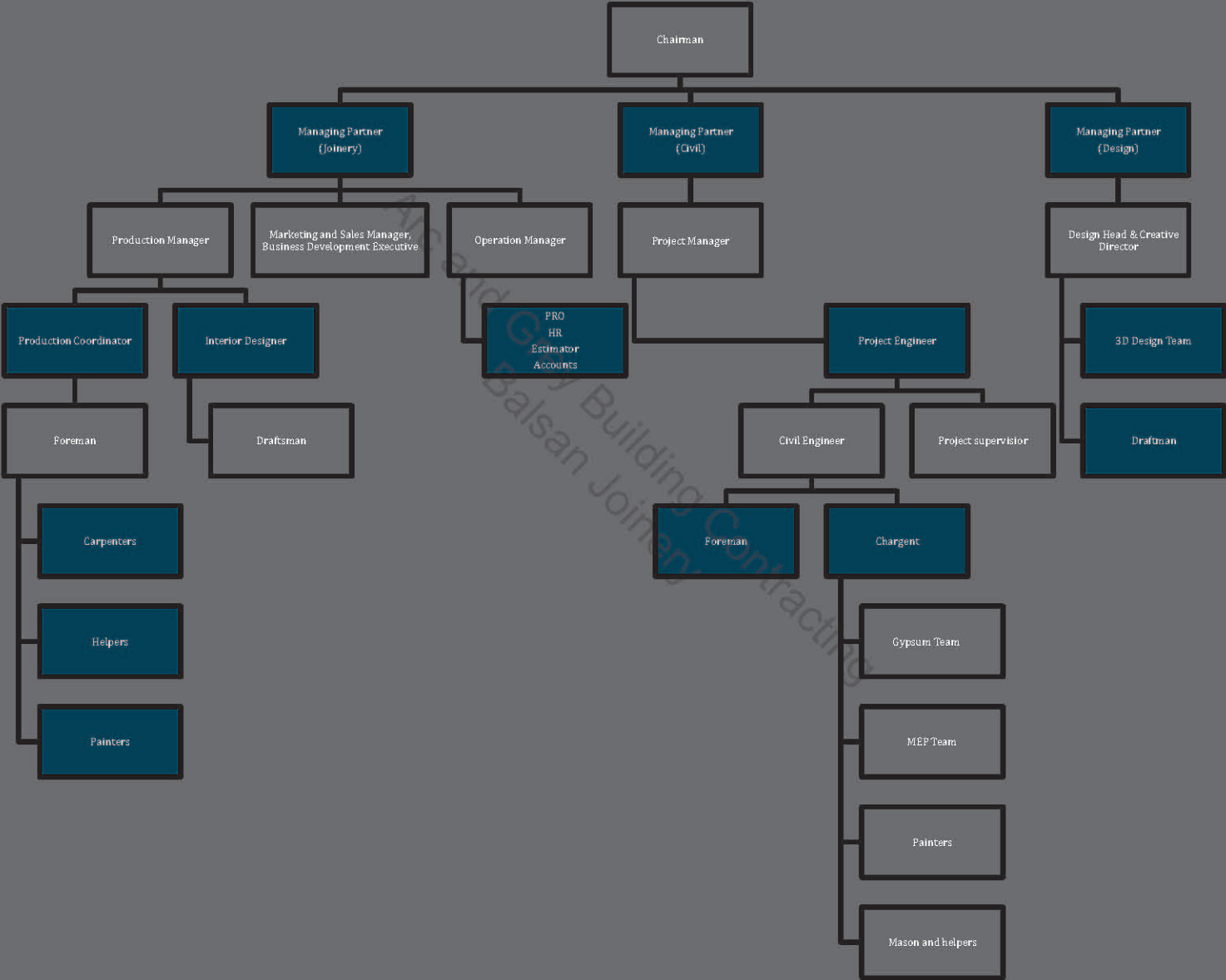
Specialist polishing & staining

- Specialist melamine finish
- Specialist PU polish
- Specialist water base polish

Interior & exterior painting

- Wall painting
- Ceiling painting
- Texture painting
- Golden & silver leafing
- Antique texture
- Light & heavy texture

# Organization Chart



## Our Team

A vital aspect of realizing the success of any company involves articulating the vision, mission and critical success factors perceived by its leaders.

The professional background of the Management as well as their passion and commitment to their profession, are crucial ingredients for giving direction to the company. At Balsan and Bombay Painting, the entire team has provided the vision and the energy that has guided the company to it achieve its success and high standards.

### **PAINT AND POLISH LEAD**

Mr. FARHAN

Farhan is the driving force and inspiration behind the company ethos. His approach in the field of interiors and life has always been a simple one – Always let the function of a space determine its form. He has always looked at design and finish of a furniture from the inside out and his belief in simple lines, attention to detail and rejection of short-lived fashions has rendered a classical signature style that is original and well recognized all over.

### **DESIGN LEAD**

Mr. Faisal Tanwar

Faisal brings with him immense experience, in the areas in both interior design and architecture. His experience and talent renders him one of the key pillars of Balsan and Bombay Painting with several high profile projects for both corporates as well as private residences and hotels in India and the UAE.

Faisal is currently handling multiple high-profile projects simultaneously in the fast paced dynamic environment of UAE's budding economy. He is in line with the fast changing trends in architecture, design and Fashion & strives to create environments that are long lasting with clean elegant forms. He is constantly exploring new innovative materials in his design and strives to create a more environmentally sensitive approach to architecture and design.

# Our Team

## **JOINERY HEAD**

Mr. Samip Shah

Samip's expertise are multifaceted with works ranging from commercial complexes and educational centers to shops, apartment buildings and Private Villas. Samip's forte lies in his ability to be involved at every step of a project; creating spaces that he sees through from the concept and the planning to the design detailing, coordination and execution, specializing in the handling of large scale projects.

Having lived and studied in Mumbai, Singapore, UK and the UAE, Samip is sensitive to the various social threads that run Globally. His work reflect the surrounding cultural context with versatile solutions, creating spaces that are enduring, elegant and beautifully proportioned.

## **CIVIL HEAD**

Eng. Ijaz Khatri

Ijaz has been in the field of civil construction projects, interior design, industrial design and architecture. He has been involved in the civil aspect of large scale healthcare facilities, hospitals, clinics and residential towers in India and the UAE. He strongly believes that any structure should be a 'complete work of art', down to the last detail. Understanding that true design follows function, his spaces are also acutely aware of form, shadow and light while at the same time paying great attention to the volume, scale and materiality. This holistic approach of creating a structure in its totality- inspires his output and can be fully appreciated in his work.

## **BUSINESS DEVELOPMENT MANAGER**

Mr. Anees U.K

Anees's ability to achieve high standards has made him a well respected member in the field of Interiors and Fit-out in the UAE. His dedication to the company and its values has helped the A&G flourish over the many years.

# PROJECTS LIST

Mr. Yousef Dowais Al Shamsi - Nad al Sheba Villa - Private Villa

Hangout Latino – Marina Walk – Marina

Nippon Bottle Company – Dusit Thani Hotel – Sz Road

Sustainable City – 148 Villas (Kitchen)

Jamaica Blue – Flora Hotel

Blow Out Saloon – Jumairah

Ele Salon – Business Bay

Farooj – Business Bay

Sarak Kumar Mobile Shop – Naif Rd.

Bloom Box – Abu Dhabi – NMC Royal Hospital

D1 Tower – App. 6302

Gulf Steel – Musaffah – Abu Dhabi

Mr. Roger – Greens View Appt - 1901

Gitex 2015 – Scope Stall

Danata – Deira

Ministry Of Labour – Saloon

Mr. Hady, Home bar

Ministry Of External Affair – Saloon



Weiss Rohlig – JABAL ALI – SOUTH

Mr. Mahmoud- X3 Cluster – JLT

Mr. Ali, V Cluster JLT – Private house

Emirates Hills Villa – R 53/54

The Villa – Mr. Rajni - Private Villa

Jumeirah Island Villa 1, Cluster 26 – Private Villa

JVT Villa no. 39 – Private Villa

Mr. Pankaj - Meadows - Private Villa

Mr. Geoff Chester – Villa 170 Al Hamra Village, RAK - Private Villa

## PROJECT GALLERY





Arc and Grey Building Contracting



















Arc and Grey Building Contracting  
Balsan Joinery







Arc and Grey Building Contracting  
Balsan Joinery









Arc and  
Joinery  
Contracting















## QUALITY CONTROL SYSTEM

A&G applies a rigorous quality control discipline to their activities. Projects are administered and managed in accordance with these requirements.

Monitoring of the Quality System is undertaken by the Quality Department within the organization. A periodic review is carried out in the presence of the Managing Director.

### **Quality Plan Narrative**

The preparation of the Project Quality Plan is the responsibility of the Project Engineer and Project Manager. Reviews and updates take place within each three-month period. The initial and subsequent issues of the Project Quality is subject for review and approval by the Management.

A&G has developed, and continue to develop, procedures in manual form for quality control activities to ensure continuous improvement and customer confidence.

The technical requirements of the contract are communicated to personnel:

- i) Selective but effective issue of the specification and drawings.
- ii) Selective but effective issue of the project quality plan.
- iii) Frequent staff meetings and briefings especially for technically demanding operations.

It is understood that the technical requirements of the client, as defined in the specification will be integrated into the A&G Quality System, and take precedence over corporate standards where deemed necessary by the Management

Quality Control Plans (QCPs) are prepared for activities which require such control under the specification, or where in the opinion of management, Quality would be adversely affected by the absence of such control. QCPs will be prepared for relevant subcontractor activities and will ensure the testing and monitoring of their activities by witness and inspection.

# PROCESS CONTROL

A Quality and Process Control System is maintained by Arc and Grey Building Contracting LLC

## **Commencement – Submittals**

**Shop Drawings:** Shop drawings are submitted to the lead consultant as required. Site conditions are verified and measurements taken prior to preparing shop drawings to ensure accurate installation of work.

**Samples:** Samples of materials, color and finishes etc. are submitted for approval before starting production.

**Sample Unit:** Samples of typical panels are submitted to the lead consultant for review where necessary. Sample units remain on site and in our factory as a standard for both manufacture and installation work.

## **Material Control – Delivery, Storage and Handling**

All materials and components are handled carefully to prevent damage and are assessed for compliance prior to production. Wherever possible, components are not delivered to site until the work of wet trades is complete.

Components are protected from moisture.

## **On-Site Activities – Installation**

All materials and components are delivered to site as per site dimension and approved shop drawings for installation.

Installation take space in accordance with our own site requirements and manufacturer's instructions as specified. Necessary site adjustments assure correct and trouble-free installation.

Allowances are made where fixed objects pass through, or project into or around, the periphery of installed work to permit normal movement without restriction.

All openings are prepared to ensure that square and clean edges are left after cutting.

## **Completion – Adjust and Clean**

All working parts are adjusted, as required, to operate smoothly without sticking and binding.

Where necessary, final adjustments are made and installed items are cleaned by removal of tape, temporary identification marks, debris, adhesive, etc.

Surplus materials, rubbish and debris resulting from the site works are removed and areas are left in a neat and clean condition.

## Project Safety Plan

The project safety plan has four functions:

- 1) To establish the safety management structure for the project.
- 2) To define the responsibilities for each person identified as having safety management duties.
- 3) To identify arrangements to minimize risks.
- 4) To ensure that team is aware of their responsibilities and carry out risk assessments accordingly.

Details of safety responsibilities will be documented in the Project Safety Plan for A&G staff and subcontractors if any.

The identification of materials, which require special handling, is also provided for in the safety plan together with precautions and responsibility for action. The control of substances hazardous to health will also be detailed.



Arc and Grey Building  
Balsan Joine



# ARC & GREY

## BUILDING CONTRACTING LLC

Arc and Grey Building Contracting LLC, 223, Business Village, Deira, UAE,  
Po Box No. 56485 Email: [info@arcandgrey.ae](mailto:info@arcandgrey.ae) web: [www.arcandgrey.ae](http://www.arcandgrey.ae)  
Call: +971 5059381896, +971 526685354, +971 506387180